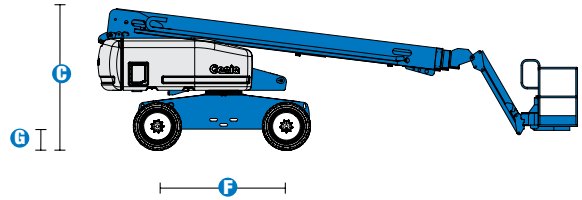
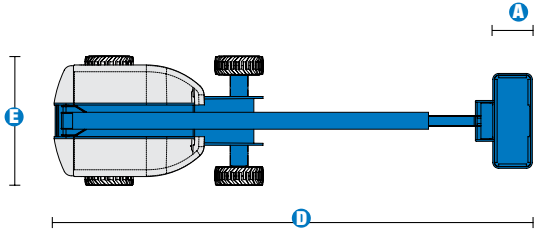
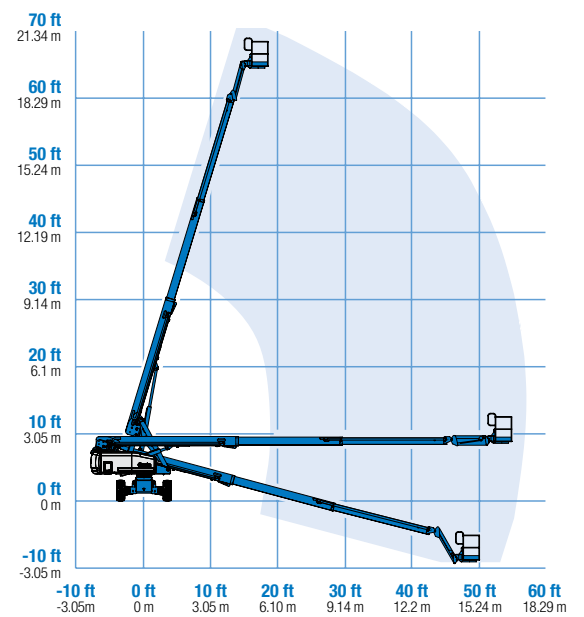


# Specifications



MODEL		S™-65	
MEASUREMENTS		Metric	US
Working height maximum*		21.80 m	71 ft
Platform height maximum		19.80 m	65 ft
Horizontal reach maximum		17.10 m	56 ft 2 in
Below ground reach		2.72 m	8 ft 11 in
A Platform length		0.91 m	3 ft
B Platform width		2.44 m	8 ft
C Height - stowed		2.72 m	8 ft 11 in
D Length - stowed		9.50 m	31 ft 2 in
Length - transport (jib tucked under)		7.60 m	25 ft
E Width		2.49 m	8 ft 2 in
F Wheelbase		2.50 m	8 ft 2.5 in
G Ground clearance - center		0.37 m	1 ft 2.5 in
PRODUCTIVITY			
Lift capacity		227 kg	500 lbs
Platform rotation		160°	160°
Vertical jib rotation		135°	135°
Turntable rotation		360° continuous	
Turntable tailswing		1.22 m	4 ft
Drive speed - 4WD stowed		4.8 km/h	3.0 mph
Drive speed - raised or extended		1.1 km/h	0.68 mph
Gradeability - 4WD - stowed**		45%	45%
Turning radius - inside		2.36 m	7 ft 9 in
Turning radius - outside		5.72 m	18 ft 9 in
Controls		12 V DC proportional	
Tyres - RT lug - Foam filled		355/55D 625	
POWER			
Power source		Deutz D2011L03i 3 cylinder diesel 46 hp (34.3 kW)	
Auxiliary power unit		12V DC	12V DC
Hydraulic tank capacity		170L	45 gal
Fuel tank capacity		132 L	35 gal
WEIGHT***			
		10,349 kg	22,815 lbs

## RANGE OF MOTION S™-65



### STANDARDS COMPLIANCE

ANSI A92.5, CSA B354.4, CE Compliance, AS 1418.10

\* The metric equivalent of working height adds 2 m to platform height. U.S. adds 6 ft to platform height.

\*\* Gradeability applies to driving on slopes, see operator's manual for details regarding slope ratings.

\*\*\* Weight will vary depending on options and/or country standards.

# Features

## STANDARD FEATURES

### MEASUREMENTS

- 21.80 m (71 ft) working height
- 17.10 m (56 ft 2 in) horizontal reach
- Up to 227 kg (500 lb) lift capacity

### PRODUCTIVITY

- 2.44 m (8 ft) steel platform
- 1.52 m (5 ft) jib boom with 135° working range
- 4WD
- Full-time active oscillating axle
- Rough terrain foam-filled tyres
- Self-leveling platform
- Hydraulic platform rotation
- Fully proportional Hall effect joystick controls
- Drive enable
- Tilt alarm
- Motion alarm
- Descent alarm
- Hour meter
- Horn
- 360° continuous turntable rotation
- Positive traction drive
- Two speed wheel motors
- Engine gauge package
- Thumb rocker steer
- Dual flashing beacons

### POWER

- 12 V DC auxiliary power
- Deutz diesel 34.3 kW (46 hp)
- Anti-restart engine protection
- Auto engine fault shutdown
- Swing out engine tray
- Deutz intake air heater

## OPTIONS & ACCESSORIES

### PRODUCTIVITY

- Platform swing gate
- Half-mesh platform inserts with swing gate
- Platform top auxiliary rail
- Air line to platform
- Hydraulic oil cooler
- Fire resistant hydraulic oil
- Biodegradable hydraulic oil
- Basic hostile environment kit
- Deluxe hostile environment kit
- Deluxe aircraft protection package (6 ft platform)
- Tool tray
- Fluorescent tube caddy
- Platform work lights
- Front driving lights
- Lockable platform control box covers
- Second battery
- Tow package
- 1.83 m (6 ft) steel platform
- Rough terrain non-marking tyres (foam-filled)

### POWER OPTIONS

- 240 V power to platform
- 7 kVA hydraulic generator (240 V/50 Hz)
- Cold Weather Packages
- Arctic Packages
- Diesel scrubber/spark arrestor muffler
- Retained key selector switch



## Genie Australia – Toll free number 1800 788 633

**Brisbane (Head Office)**  
33 Kimberley Street  
Darra QLD 4076

**Sydney**  
74 Glendenning Road  
Glendenning NSW 2761

**Melbourne**  
374 Hammond Road  
Dandenong VIC 3175

**Perth**  
126 Sheffield Road  
Welshpool WA 6106

## Genie United States

## Distributed by:

18340 NE 76th Street  
P.O. Box 97030  
Redmond, Washington  
98073-9730

Effective Date: April 2012. Product specifications and prices are subject to change without notice or obligation. The photographs and/or drawings in this document are for illustrative purposes only. Refer to the appropriate Operators' Manual for instructions on the proper use of this equipment. Failure to follow the Operators Manual when using our equipment or to otherwise act irresponsibly may result in serious injury or death. The only warranty applicable to our equipment is the standard written warranty applicable to the particular product and sale and we make no other warranty, express or implied. Products and services listed may be trademarks, service marks, or trade names of Terex Corporation, Terex South Dakota, Inc., and/or their subsidiaries in the USA and other countries. All rights reserved. Terex is a registered trademark of Terex Corporation in the USA and many other countries. Genie is a registered trademark of Terex South Dakota, Inc. in the USA and many other countries. ©2009 Terex Corporation.